

**Directions to Epsilon****From The Mass Pike, or Route 128 (I-95) North Bound:**

- \* From the Pike: Take exit 14 for Route 128 (I-95) North Bound
- \* Take Exit 26 for Route 20
- \* Take Rte. 20 East for a short distance and then loop around north to 117 West
- \* Follow the signs for Route 117 West
- \* Proceed west on Route 117 W, passing through Weston, Lincoln, Concord, Sudbury, and into Maynard.
- \* At stoplight at the intersection of Route 117 and Route 62 East, take a right onto Route 62 East. (This is about one (1) mile past the stoplight at Route 27 at a Mobil station)
- \* After approximately half of a mile on Route 62 East, you will see the Clock Tower Place on the right.
- \* Park either in one of the visitor parking spots of Clock Tower Place parking lot or across the street in Epsilon reserved spaces.

**From Route 128 (I-95) South Bound**

- \* Take Exit 29B for Route 2 West.
- \* Proceed westbound on Route 2 through Concord and Lincoln (At the Crosby's Corner dogleg, stay left to continue on Route 2)
- \* Take a left onto Route 126, the first stoplight following the dogleg.
- \* Continue on Route 126 for approximately two (2) miles, at which point it will intersect Route 117.
- \* Take a right onto Route 117 and follow it west to Route 62 east (Stoplight with a Mobil station)
- \* Take a right on Route 62 East
- \* After approximately half of a mile on Route 62 East, you will see the Clock Tower Place on the right.
- \* Park either in one of the visitor parking spots of Clock Tower Place parking lot or across the street in Epsilon reserved spaces.

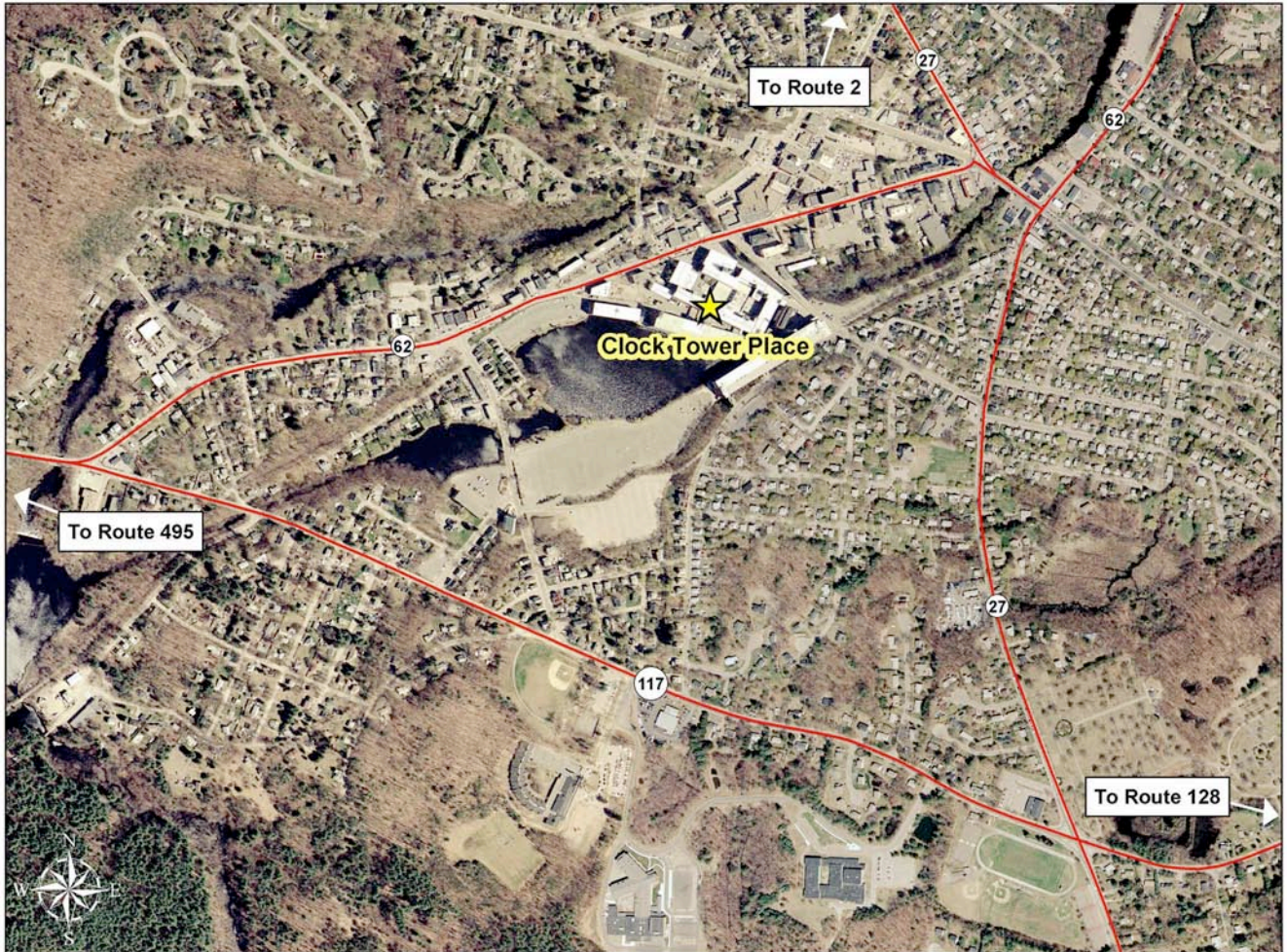
**From I-495 North Bound**

- \* Take Exit 27 for Route 117.
- \* Proceed east on Route 117, passing through Bolton and Stow, before entering Maynard.
- \* Take a left onto Route 62 East at an intersection with a stoplight and a Mobil station.
- \* After approximately half of a mile on Route 62 East, you will see the Clock Tower Place on the right.
- \* Park either in one of the visitor parking spots of Clock Tower Place parking lot or across the street in Epsilon reserved spaces.

**From I-495 South Bound**

- \* Take Exit 29A for Route 2 East.
- \* Take a right on Route 27 South towards Maynard/Acton.
- \* In Maynard, take a right on Summer St. (Stoplight with a McDonalds).
- \* Take your first left onto Nason St.
- \* This will merge with Main St.
- \* Clock Tower Place will be on your left.
- \* Turn left into the large parking lot.
- \* Park either in one of the visitor parking spots of the Clock Tower Place parking lot, or across the street in Epsilon reserved spaces.

Directions to Epsilon



**Directions to Epsilon**

**Walking Directions from Epsilon Parking Area:**

Walk across the street, go between the two buildings (#150 - Epsilon's former space), and 1 Clock Tower Place - a big long mill building. Proceed along beneath the garage, and you'll see the long mill building continuing along on your right, with yellow banners proclaiming 3 Clock Tower Place. After the second such banner is a doorway, labelled "Center Entrance," with a yellow awning above it. Enter there; go up one flight of stairs and into the hall. Epsilon is on your left.

Or

Walk across the street, go between the two buildings (#150 - Epsilon's former space), and 1 Clock Tower Place - a big long mill building. Proceed along beneath the garage; enter glass atrium between Building 1 & 3. Inside building turn left. Continue along the corridor until you come to the very end. Take the stair or elevator to the second floor. Epsilon is on the left.

